

Participate in our new study on Youth Engagement in Research

What is the purpose?

To understand the training needs of youth and young adults with disabilities in order to adapt the current Family Engagement in Research (FER) course for youth.



Examples of NDDs include:

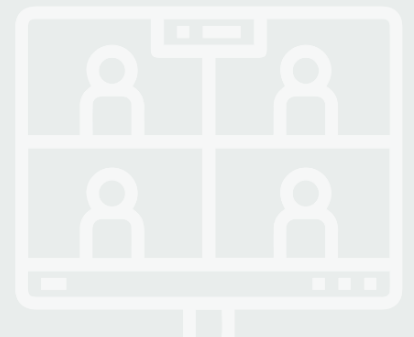
- Cerebral Palsy
- Autism Spectrum Disorder
- Attention Deficit Hyperactivity Disorder
- Other rare genetic disorder

Who can participate?

All youth and young adults (age 12–25) with neurodevelopmental disabilities (NDD), who can communicate and understand English.

What is your role?

You will be asked to complete a brief questionnaire and to participate in a one-hour focus group over Zoom with other youth and young adults.



Benefits?

The study will provide you with an opportunity to express your opinions and make an impact on patient orientated research.

You will also receive \$20 giftcard for participating.

TO SIGN UP OR FOR MORE INFO, PLEASE CONTACT:



Samantha Yimeng Dong
CanChild Centre for Disability Research
dongy58@mcmaster.ca

